


This user guide is intended to provide you with guidelines to ensure that operation of this product is safe and does not pose risk to the user. Any use that does not conform to the guidelines described in this User Guide may void the limited warranty.

Please read all directions before using the product and retain this guide for reference. This product is intended for household use only. It is not intended for commercial use.

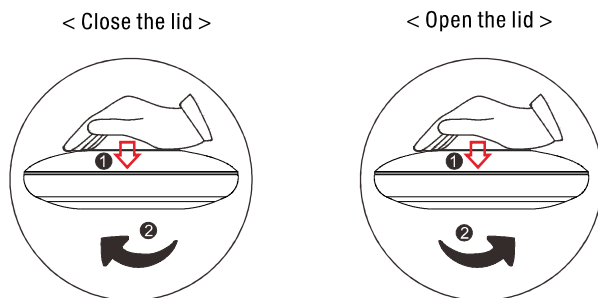
Safety Tips and Precautions

- Do not place the appliance near open flames or heat sources. Fire, electric shock, product damage, or injury might occur.
- Be careful not to drop the pill dispenser, as this could damage the product or pills inside.
- Water can damage the dispenser, cause issues with the battery, or otherwise adversely affect the medication contained inside. Do not immerse this pill dispenser in water or other liquids, or expose it to liquids that might get splashed on it. Do not place it in an environment where there is excessive moisture or humidity.
- Never force the locking cover open.
- A low battery symbol  will appear in the upper right corner of the LCD display when battery power is low. Be sure to charge the battery promptly to ensure the proper operation of the pill dispenser.

2

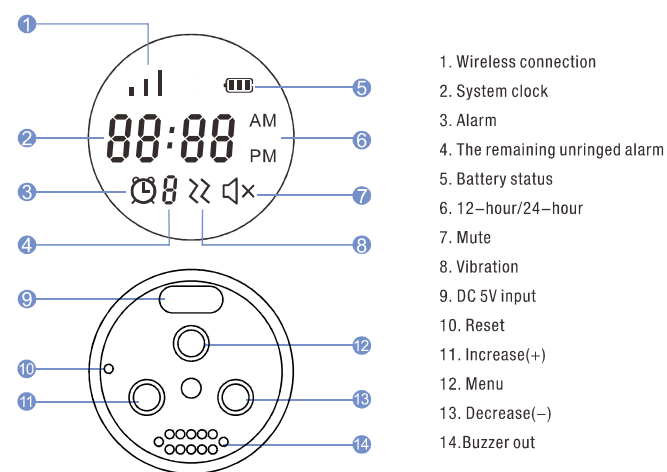
Open and close the lid of Pill Box

- Press the lid down and turn it clockwise to CLOSE the lid.
- Press the lid down and turn it counter-clockwise to OPEN the lid.



3

Product overview



- Wireless connection
- System clock
- Alarm
- The remaining unringed alarm
- Battery status
- 12-hour/24-hour
- Mute
- Vibration
- DC 5V input
- Reset
- Increase(+)
- Menu
- Decrease(-)
- Buzzer out

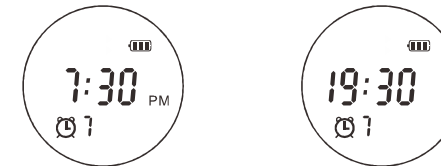
4

Power ON and OFF

- Press and hold the " Menu " for three(3) seconds to power on the device.
- Press and hold the " Menu " , " + " and " - " simultaneously for three(3) seconds to power off .

Setting the 12-hour and 24-hour mode

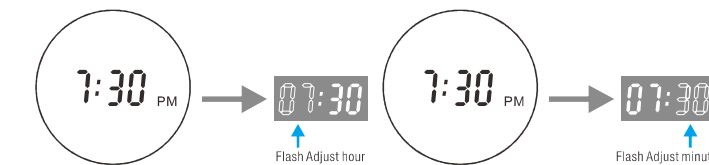
- Press and hold the " + " for three (3) seconds to select between 12-hour and 24-hour mode.



Setting the system clock

- Press and hold the " Menu " for three (3) seconds to enter the setting mode. Then, press the " Menu " once to start the time setting. (the digit of hour start flashing)
- Press the " + " or " - " to adjust the hour. Then, press the " Menu " once to move to set the minute.

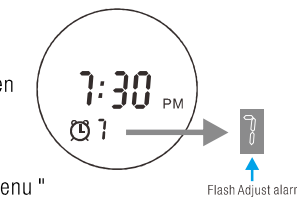
5



- Press the " + " or " - " to adjust the minute.
 - Press the " Menu " to exit time setting with changes saved.
- Note: The flashing digits on display indicates that the current number is being changed.

Setting the alarm

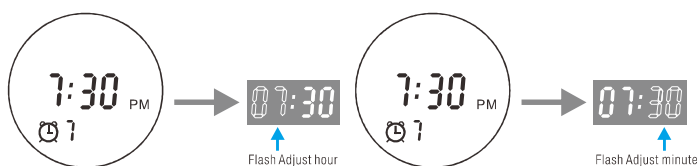
- Press and hold the " Menu " for three (3) seconds to enter the setting mode and then press " + " or " - " once to enter setting alarm mode.
- Press the " + " or " - " to select an alarm from 1st to 7th alarms, then press the " Menu " once to save.



6

- Press the " + " or " - " to adjust the hour. Then, press the " Menu " once to move to adjust the minute.
 - Press the " + " or " - " to adjust the minute.
 - Press the " Menu " to exit time setting with changes saved.
- Note: The flashing digits on display indicates that the current number is being changed.
- Press and hold the " Menu " for three (3) seconds to save desired alarm setting and exit the alarm setting mode.
 - To cancel the setting changes, wait a few seconds for the alarm setting mode to end automatically.
- Note: Press " Menu " once to end the alarm ringing after taking the medicine.

★ **Flashing red light means overtime alarm. (Medications are taken late.)**



7

Setting the alarm tone

- Press and hold the " - " for three (3) seconds to select different alarm tone.

Reset all Settings

- Press and hold the " + " or " - " simultaneously for five (5) seconds to clear and reset all settings on the device.

Download and install APP

Download and install the APP on your and/or your caregiver's smartphone via as following ways:

- Scan QR code to download " iDispenser " APP.
- Search for " iDispenser " via " Google Play " .
- Search for " iDispenser " via the apple APP Store.

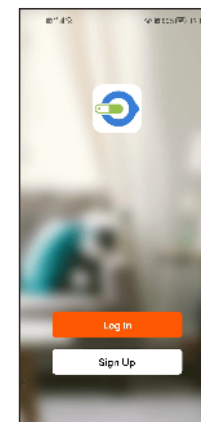


8

Register

If you are a first time iDispenser user, please create an account.

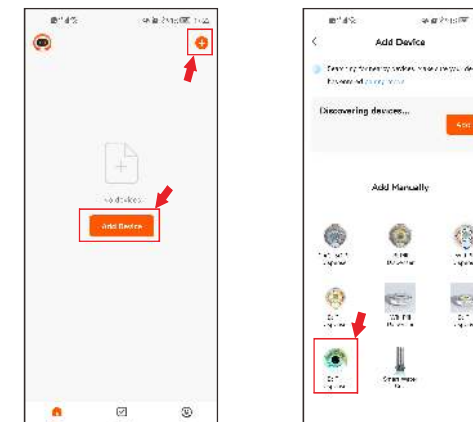
- Open the iDispenser & tap "Register."
- Agree to the Privacy Policy terms & conditions.
- Enter a valid email address or phone number verify.
- Get verification code & enter verification code.
- Create a password and login.



9

Connection between APP and device.

- Open the APP of iDispenser in smart phone, and then click the " + " button to enter " Add device " page.



10



Portable Smart Pill Box
User Guide